

## DMX-I-4406™ AND DMX-I-4604™ PRODUCT SPECIFICATIONS

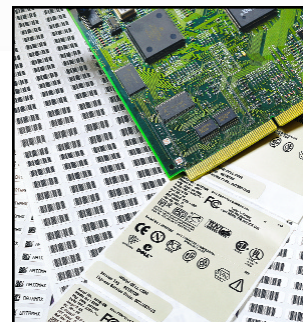
THE I-CLASS PRINTER FROM DATAMAX



When first introduced, the Datamax I-Class™ products brought new innovations and standards in price, performance, quality and reliability to the 4" thermal printing market. Now, the new high-density DMX-I-4406 and DMX-I-4604 offer even greater capability for printing labels that require high resolution.

With 16MB of standard memory and a 90 MHz processor, downloading large amounts of intricate information is a breeze. Throughput is the fastest in this class of printer thus making large batch jobs flow quickly. Both products are built on Datamax's proven I-Class design and are perfect for applications utilizing very small labels with high resolution and intricate graphics, or two-dimensional bar codes including Micro PDF, PDF417, Aztec and Datamatrix. The 406 dpi (16 dots/mm) and 600 dpi (24 dots/mm) printheads, coupled with the capability to accurately maintain critical print registration enable these products to produce labels for applications such as small parts tracking, identification of wiring harnesses, pharmaceutical packing and research samples, just to name a few. The die-cast aluminum frame and metal cover provide a rugged, reliable platform that stands up to the harshest industrial environments.

Both products print a full 4-inch wide label. Field installable flash/font expansion cards serve to minimize download time and maximize printer output by allowing for label format and graphics storage, downloadable fonts and international language print capabilities. The I-4406 and I-4604 printers are the most versatile products in the 4" market.



### STANDARD FEATURES:

- Powerful 32-bit multi-tasking processor and an industry leading 16MB of addressable RAM
- Easy-to-read front LCD display
- Color coded operator cues
- Embossed media loading diagrams
- Easily accessible printhead mechanism
- Unique collapsible ribbon hub for easy loading
- Flash upgradeable firmware

### ENGINEERED TO PROTECT YOUR INVESTMENT :

- Modular design facilitates adding and/or changing options
- Easy to upgrade and reconfigure for business growth
- Change the printhead and platen roller in less than 5 minutes
- Standard bi-directional parallel and high-speed serial interfaces allow easy integration into your system
- Optional Ethernet and Twinax/Coax support allows the printer to connect to virtually any host system environment
- 3-year limited warranty

The Datamax I-Class products work perfectly with your computer system. When it comes to precise registration, intricate graphics and high performance, the choice is easy. **Datamax I-Class** products are the industry's answer for your high resolution printing requirements. Visit our website at [www.datamaxcorp.com](http://www.datamaxcorp.com) or call 1-800-816-9649 for more information.



#### Corporate Headquarters

4501 Parkway  
Commerce Boulevard  
Orlando, Florida USA 32808  
(407) 578-8007  
Fax (407) 578-8377  
<http://www.datamaxcorp.com>  
<http://www.govt.datamaxcorp.com>

#### Datamax International

Herbert House  
Elizabeth Way, Pinnacles  
Harlow, Essex CM19 5FE UK  
+44 1279 772200  
Fax +44 1279 424448

#### Datamax Latin America

4501 Parkway  
Commerce Boulevard  
Orlando, Florida USA 32808  
(407) 523-5520  
Fax (407) 578-8377

#### Asia-Pacific Sales

19 Loyang Way  
#01-01 CILC Building  
Singapore 508724  
+65 542-2611  
Fax +65 542-3611

# DMX-I-4406™ AND DMX-I-4604™ PRODUCT SPECIFICATIONS



Datamax is a government certified GSA vendor.

<b>PRINTER TYPE</b>	Direct Thermal, Optional Thermal Transfer
<b>PRINT SPEED</b>	2" – 6" per second (51mm – 153mm), 2" – 4" per second (51mm – 102mm) in .5" programmable increments
<b>RESOLUTION</b>	406 dpi (16 dots/mm); 600 dpi (24 dots/mm)
<b>BAR CODE MODULUS</b>	5 mil to 110 mil "X" dimension in picket fence or ladder orientations
<b>MAXIMUM PRINT WIDTH</b>	4.16" (105.6mm)
<b>MEDIA WIDTH</b>	1" – 4.65" (25mm – 118mm)
<b>PRINT LENGTH</b>	0.25" – 80" (6mm – 2000mm); 0.25" – 55" (6mm – 1375mm); .75" (19mm) minimum print length with optional present sensor
<b>MEDIA WINDOW</b>	Clear side door panel to easily monitor media supply levels
<b>MEDIA TYPE</b>	Roll-fed or fan-fold materials, die-cut or continuous labels; perforated or continuous tag/ticket stock
<b>MEDIA THICKNESS</b>	.0025" – .0100" (.0635mm – .254mm)
<b>MEDIA SENSING</b>	Adjustable sensor detects "see through" for liner-backed die-cut labels and tags or reflective sensing for media with black stripe sensing
<b>SUPPLY ROLL</b>	8" (203mm) maximum diameter on 1.5" – 3" (38mm – 76mm) core. Fan-fold stock accepted from rear of printer
<b>REVOLVING MEDIA HUBS</b>	Standard in 1.5" and 3.0" optional 40 mm.
<b>LABEL BACKFEED</b>	For use with optional cutter
<b>RIBBONS</b>	industry-standard ribbon widths; 1" (25mm) ribbon core, 1968' (600M) in length
<b>CABINET</b>	Metal construction
<b>BAR CODES</b>	Code 39, Interleaved 2 of 5, Code 128 (subsets A,B and C), Codabar, LOGMARS, UPC-A, UPC-E, UPC 2 & 5 digit addendums, EAN-8, EAN-13, EAN 2 & 5 digit addendums, UPC random weight, Code 93, MSI Plessey, Universal Shipping Container Symbology, QR Code, UCC/EAN Code 128, Postnet, Code 128 MOD 43, PDF 417, UPS MaxiCode (mode 2 & 3), Datamatrix, Telepen, Micro PDF, Aztec
<b>RESIDENT FONTS</b>	Ten alphanumeric fonts from .035" (.89mm) to .64" (16.26mm) including OCR-A, OCR-B, CG Triumvirate™ and CG Triumvirate Bold Condensed scalable font from AGFA®
<b>CHARACTER SET</b>	Over 30 International Code Pages; includes characters for English and most European, Scandinavian and Spanish speaking countries. Also includes double byte code support
<b>FONT EXPANSION/ROTATION</b>	All fonts expandable vertically and horizontally up to 24x; fonts and graphics can be printed in four directions: 0°, 90°, 180° and 270°
<b>GRAPHICS SUPPORT</b>	.PCX, .BMP and .IMG files
<b>REVERSE FIELDS/MIRROR IMAGE</b>	Any font or graphic field can be printed as a normal or reverse image
<b>MEMORY</b>	2MB Downloadable Flash Program Memory – 256 MB available to user 16MB DRAM memory
<b>INTERFACES</b>	Centronics® Parallel port (IEEE 1284 compliant), RS232 at 2,400 to 38,400 BPS, optional Ethernet; optional RS422
<b>WINDOWS® DRIVER</b>	Used for creating label formats using virtually any Windows®-based program. Included on Datamax Accessories CD, or via our web site at <a href="http://www.datamaxcorp.com">www.datamaxcorp.com</a>
<b>POWER SOURCE</b>	Auto-sensing 115, 230 VAC 50/60 Hz; specify appropriate power cord when ordering
<b>OPERATING TEMPERATURE</b>	40°F to 95°F (4°C to 35°C)
<b>DIMENSIONS</b>	12.70" H x 12.62" W x 18.60" D (322.6mm H x 320.6mm W x 472.5mm D)
<b>WEIGHT</b>	45 lbs., 20.5Kg
<b>OPTIONS</b>	<b>ALL OPTIONS ARE EASILY INSTALLED IN THE FIELD OR CAN BE ORDERED AS FACTORY INSTALLED</b>
<b>THERMAL TRANSFER</b>	Simple ribbon loading featuring collapsible ribbon hub
<b>STANDARD MEDIA CUTTER W/ TRAY</b>	Maximum Thickness .010" (.254mm)
<b>LIGHT DUTY CUTTER</b>	Maximum Thickness .005" (.127mm)
<b>INTERNAL REWIND</b>	6" (125mm) OD capacity; label backing rewind in peel and present mode and liner rewind in batch mode with present sensor used for on-demand label dispensing (factory or field installed)
<b>I/O EXPANSION CARD</b>	Featuring 8MB Flash, general purpose I/O, time and date battery backup
<b>PASSPORT</b>	Portable keyboard/display terminal provides interface for stand-alone printing
<b>LABEL PRESENT SENSOR</b>	Used for on-demand label dispensing
<b>NETWORK CONNECTIVITY</b>	Internal Ethernet Adapter 10/100 mbps allows multiple users on various platforms to share the same printer
<b>Hosts Supported:</b>	• Novell NetWare • UNIX • Windows NT • LAN Manager • AppleTalk • DEC
<b>Protocols Supported:</b>	• IPX • TCP/IP • LPR • LAT • NetBIOS/NetBEUI
<b>INTERNAL TWINAX/COAX INTERFACE</b>	Supports printing from IBM® midrange or mainframe computers
<b>FONT/FLASH EXPANSION</b>	Features 4MB font memory and 4MB addressable Flash memory expansion
<b>INTERNATIONAL LANGUAGE PRINT CAPABILITY</b>	Consisting of the Font/Flash expansion card plus one of the following: CG-Times Scalable font or; simplified Chinese GB Scalable font or; Kanji Gothic B Scalable font



Built to UL, CSA and TUV-GS safety standards, FCC Class A emissions standard and CE Mark. This data sheet is for informational purposes only. DATAMAX MAKES NO WARRANTIES, EXPRESSED OR IMPLIED, IN THIS SUMMARY. Specifications are subject to change without notice. All trademarks are the property of their respective owners.  
© 2001 DATAMAX BAR CODE PRODUCTS CORPORATION. All rights reserved 02/01.